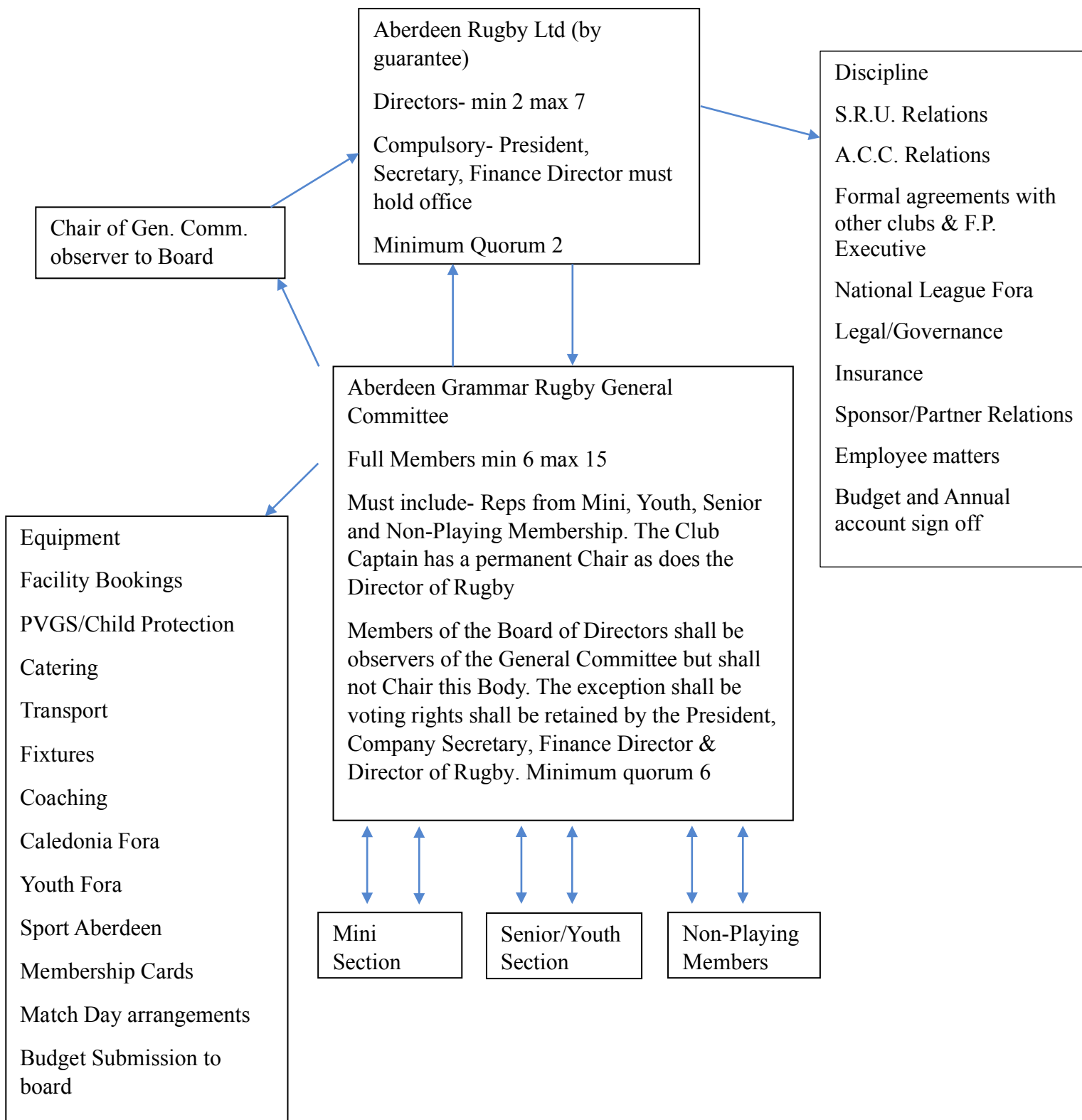


## Organisational Flow Chart - Aberdeen Grammar Rugby - Aberdeen Rugby Limited



1. All members of the General Committee and Directors of the board must be members of Aberdeen Grammar Rugby. The only exception will be for short term specialist advisors co-opted onto either body.
2. All persons either elected to or appointed by either body will cease to be a member if they fail to attend 3 consecutive meetings without prior approval from the Chair of the respective body.
3. The Chair of the General Committee cannot be current Director of the Board of Aberdeen Rugby Limited.
4. For the avoidance of doubt or dispute anything contained within the management agreement document or the organisational flow chart that contradicts the memorandum of association or other company documents will be invalid as the company documents shall take priority.